



COWRA HOSPITAL REDEVELOPMENT TAKING SHAPE

The \$110.2 million Cowra Hospital Redevelopment will transform the delivery of healthcare for the Cowra community, delivering high-quality contemporary and accessible care close to home.

## Construction update

The hospital's two-level design is taking shape following progressive concrete pours in recent months. All major pours are expected to be complete in the coming weeks.

The new permanent driveway on Brisbane Street to support the Emergency Department as well as the back of house is now complete with Ina Drive kerb work now underway.

The current hospital remains operational while construction of the new hospital is underway.

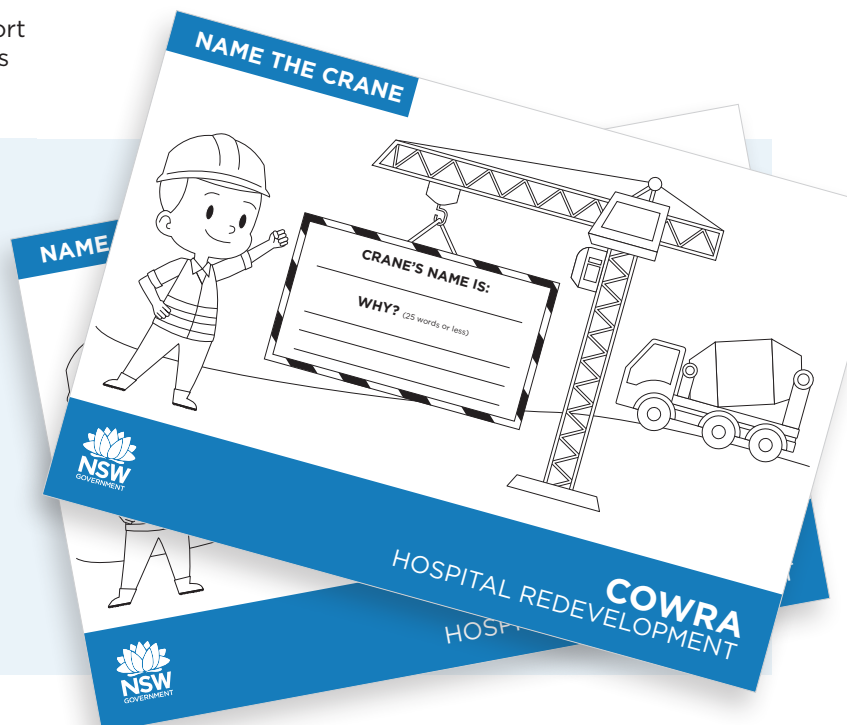
## Name the Crane

Thank you to all the local school students who entered the competition to name the 30-metre-high tower crane supporting the delivery of the \$110.2 million Cowra Hospital Redevelopment.

The entries are being assessed with the winner to be announced in the coming weeks.

The prize includes a class morning tea on site with each student to receive a hard hat and vest. While on site the class will take part in the official crane naming ceremony including watch the flag with their chosen name hoisted above the crane.

We look forward to announcing the winner and welcoming them on site.



# Register your interest to contribute to the arts and culture for the new hospital

In the coming months the project will be issuing Expressions of Interest for local artists to contribute to the art and culture for the new Cowra Hospital. These opportunities will be promoted through the local community and to register your interest and receive the Expressions of Interest, please contact the project team via email [HI-Cowra@health.nsw.gov.au](mailto:HI-Cowra@health.nsw.gov.au)

## Ina Drive currently closed

Over the coming months there will be some temporary changes to traffic. We recognise that building new infrastructure can impact nearby residents, patients, staff and road users. All activities will be carried out with the health and safety of the local community as our top priority.

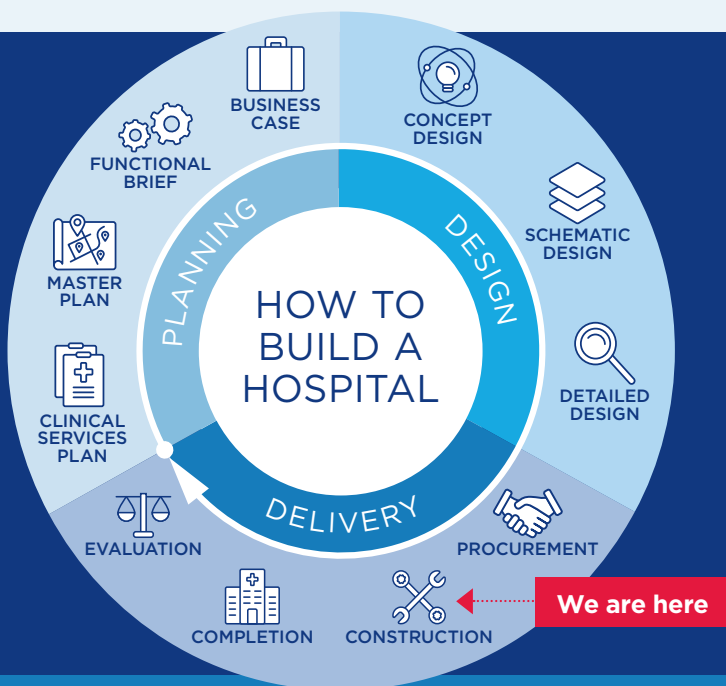
To be informed of temporary impacts, the Works Notifications and Fact Sheets are located on the project website and for your safety, please follow the directions of traffic controllers and road signage at all times.

**Ina Drive (between Liverpool Lane and Carleton Street) closed to vehicles: 16 September to 6 December 2024.**

**Alternative route via Darling Street to Carleton Street.**



## Project timeline



## Where is the project up to?

The project is currently in the construction phase.

## Stay in touch



Feedback from our communities helps inform the design of health facilities to meet the local needs. If you have a question or comment, or would like to join our mailing list, please scan the QR code or contact the project team via the details below.

FOR MORE INFORMATION ABOUT THE REDEVELOPMENT:

**Web:** [cowrahospitalredevelopment.health.nsw.gov.au](http://cowrahospitalredevelopment.health.nsw.gov.au)

**Email:** [HI-Cowra@health.nsw.gov.au](mailto:HI-Cowra@health.nsw.gov.au)

**Phone:** (02) 9978 5432